



Awning System

markilux syncra

with the markilux MX-1, MX-1 compact

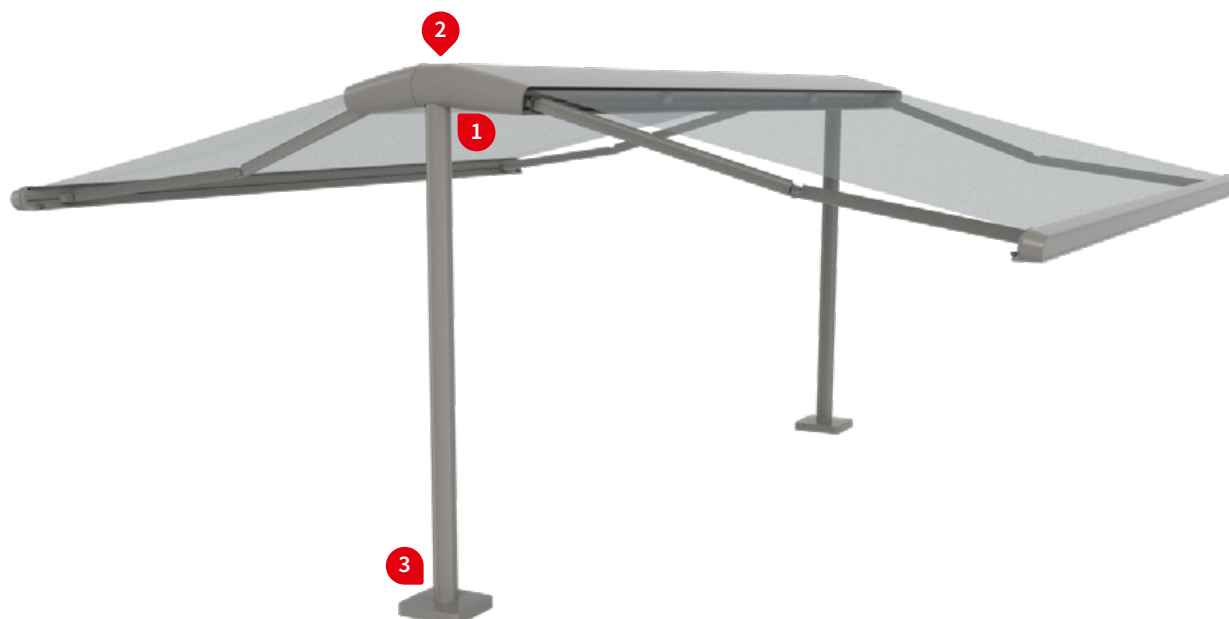
The ideal awning frame system with minimum space requirements – stylish sun and wet weather protection for large areas.

Product characteristics

markilux syncra fix / syncra flex

Wind resistance class 2

Beaufort 5 → 7.5–10.4 m/s → 28–37 km/h → 17–23 mph



1 Combination example with the markilux MX-1, round post



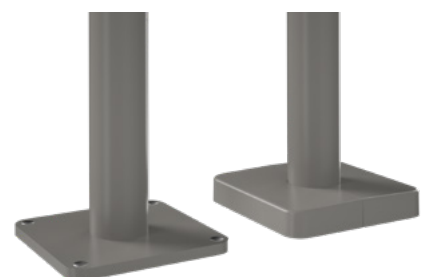
1 Combination example with the markilux MX-1 with LED-Spots in the canopy ¹⁾, round post



2 Dummy cassette around the cross beam resulting in perfect system design



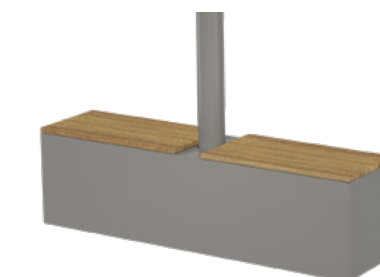
3 Footplate for the markilux syncra fix, symmetrical, with aluminium foot-plate cover ¹⁾



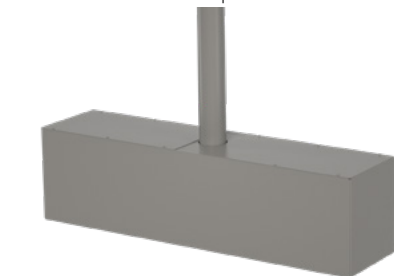
3 Stabilisation box ²⁾ syncra flex, open at the top ¹⁾



3 Stabilisation box ²⁾ syncra flex, with wood-look box cover ¹⁾



3 Stabilisation box ²⁾ syncra flex, with aluminium cover plate ¹⁾



1) Optional configuration

2) Fill each of the stabilisation boxes on site with at least 625 kg of sand, gravel or pebbles.

Product characteristics

markilux syncra uno fix / syncra uno flex

Wind resistance class 2

Beaufort 5 → 7.5–10.4 m/s → 28–37 km/h → 17–23 mph

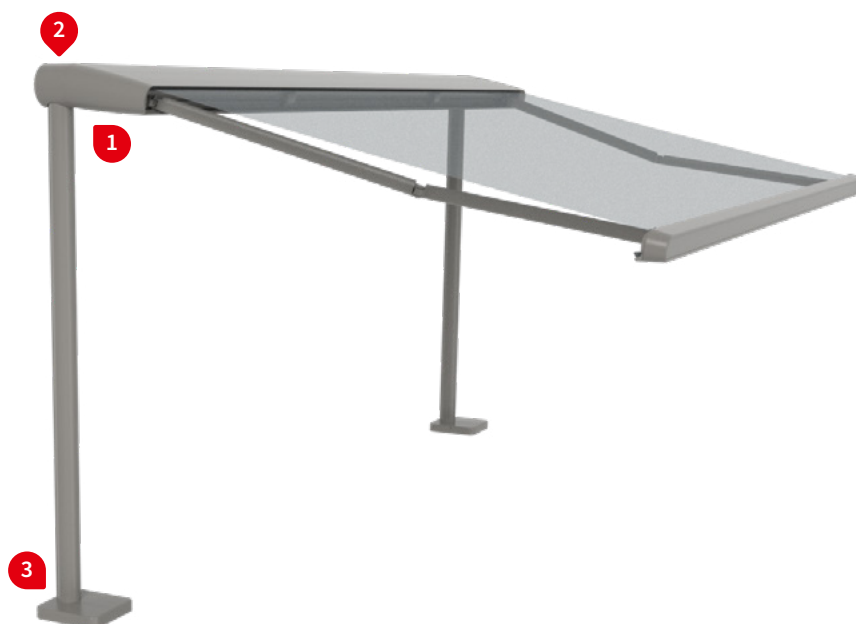
01

02

03

04

05



1 In combination with the markilux MX-1



1 In combination with the MX-1 compact



1 In combination with the MX-1 with LED-Spots in the canopy underneath¹⁾, round post



1 In combination with the MX-1 with LED-Spots on top in the canopy¹⁾, round post



2 Dummy cassette around the cross beam resulting in perfect system design



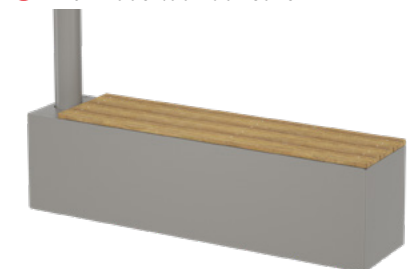
3 syncra uno fix with asymmetrical footplate, aluminum footplate cover¹⁾



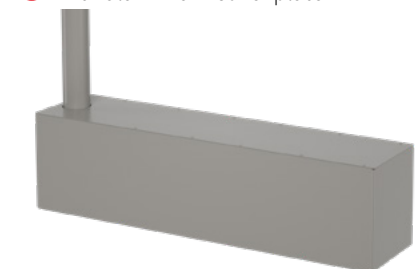
3 Stabilisation box²⁾ syncra uno flex, open at the top¹⁾



3 Stabilisation box²⁾ syncra uno flex, with wood-look box cover¹⁾



3 Stabilisation box²⁾ syncra uno flex, with aluminium cover plate¹⁾



1) Optional configuration

2) Fill each of the stabilisation boxes on site with at least 625 kg of sand, gravel or pebbles.

01
02
03
04
05

Frame colours

markilux awning colours without surcharge

traffic white, RAL 9016



metallic aluminium, RAL 9006



grey brown, similar to RAL 8019



off-white textured finish, 5233 ¹⁾



stone grey metallic, 5215 ¹⁾



anthracite metallic, 5204 ¹⁾



Havana brown textured finish, 5229 ¹⁾



Non-standard powder-coated finish

Bespoke frame colours incur a surcharge – matt, metallic, finely textured and pearl finishes as well as other colour ranges (DB, Tiger etc.) on request. All frame colours are available at a surcharge with enhanced corrosion protection.

Colours may differ slightly from those depicted in both hue and finish.

1) textured finish

Combination Possibilities



01

02

03

04

05

markilux syncra with markilux MX-1

with round posts



with square posts



markilux syncra with markilux MX-1 compact

with round posts



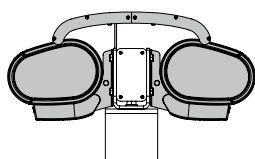
with square posts



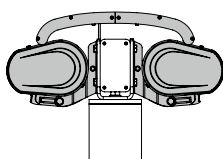
01 Overview of the awning combinations available

02 markilux syncra uno with two folding-arm awnings

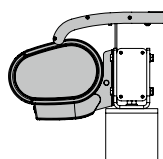
03 markilux syncra uno with one folding-arm awning



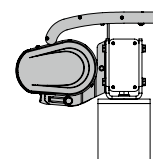
markilux 6000



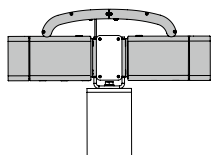
markilux 5010



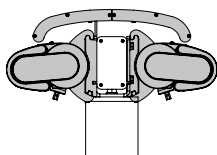
markilux 6000



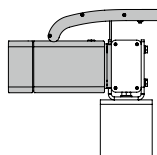
markilux 5010



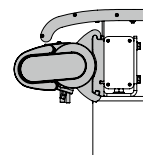
markilux 970



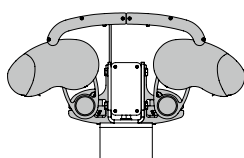
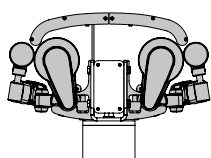
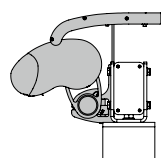
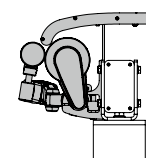
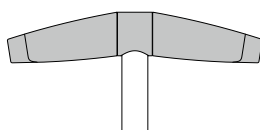
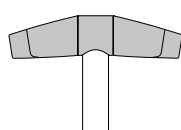
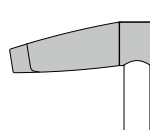
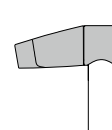
markilux 990



markilux 970



markilux 990

markilux 1650 / 1600 /
1600 stretchmarkilux 1710 /
1710 stretchmarkilux 1650 / 1600 /
1600 stretchmarkilux 1710 /
1710 stretchmarkilux
MX-1markilux
MX-1 compactmarkilux
MX-1markilux
MX-1 compact

Special Notes

- dimensions and technical details can be found in the separate document “markilux syncra fix / syncra uno fix with Folding-arm Awnings” and “markilux syncra flex / syncra uno flex”.
- on despatch the awning pitch is set as a rule at approximately 15° so that water drainage can be guaranteed in light rain. The pitch can be readjusted to meet individual requirements on site – depending on the post height the resulting headroom clearance will have to be taken into account (see technical details).
- the markilux syncra, in combination with the MX-1 / MX-1 compact, cannot be supplied as a coupled unit.
- the markilux syncra, in combination with the MX-1 / MX-1 compact, cannot be fitted to a wall on one side.
- for additional information and configuration options, please refer to the section “General Information” and “markilux Optional Accessories” in the volume “Patio and Balcony Awnings”.
- the markilux MX-1 compact, in combination with the markilux syncra, cannot be supplied in the largest possible sizes (slightly larger sizes on request).
- please note that shading systems may be subject to compulsory planning permission regulations depending on the region!